

# MINI CONTACTORS AND OVERLOADS **LS** Industrial Systems

from

**\$11**



6 to 12 Amp

**GMC-12M**



**Features:**

- Surface or DIN-rail mountable
- UL508 compliant
- 1/2 HP to 7-1/2HP
- 50/60Hz AC and DC versions available
- Direct-mounting overloads
- UL and CE certified
- RoHS compliant
- Auxiliary contacts standard (1 N.O.)

**Optional Accessories Include:**

- Additional auxiliary contact blocks
- Reverse mounting kits and interlocks
- Time delay units
- Surge suppressors
- Direct mount to Manual Motor Starter (with optional adapter)

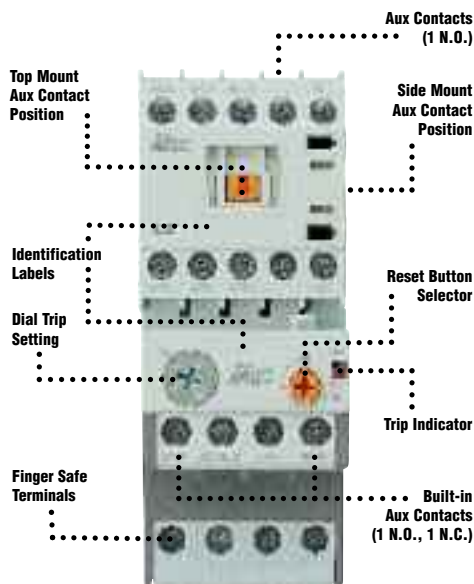
Formerly LG Industrial Systems



## MetaMec Mini Contactors (6 - 12A)

Part Number	Price	Coil Voltage	Aux. Contacts	Resistive Load (AC1)	UL HP Ratings (AC3 Motor Load)					Optional Overload Relay
					Single Phase		Three Phase			
					115V	230V	230V	460V	575V	
<b>6 Amp, Screw Terminals</b>										
GMC-6M-10-24	<b>\$11</b>	24VAC (50/60Hz AC)	1 N.O.	20A	0.5HP (9.8A)	1HP (8A)	1.5HP (6A)	3HP (4.8A)	3HP (3.9A)	GTK-12M
GMC-6M-10-120	<b>\$11</b>	120VAC (50/60Hz AC)								
GMC-6M-10-208	<b>\$11</b>	200 - 208VAC (50/60Hz AC)								
GMC-6M-10-230	<b>\$11</b>	230 - 240VAC (50/60Hz AC)								
GMC-6M-10-480	<b>\$11</b>	480VAC (50/60Hz AC)								
GMD-6M-10-12	<b>\$13</b>	12VDC								
GMD-6M-10-24	<b>\$13</b>	24VDC								
<b>9 Amp, Screw Terminals</b>										
GMC-9M-10-24	<b>\$12</b>	24VAC (50/60Hz AC)	1 N.O.	20A	0.5HP (9.8A)	1.5HP (10A)	3HP (9.6A)	5HP (7.6A)	5HP (6.1A)	GTK-12M
GMC-9M-10-120	<b>\$12</b>	120VAC (50/60Hz AC)								
GMC-9M-10-208	<b>\$12</b>	200 - 208VAC (50/60Hz AC)								
GMC-9M-10-230	<b>\$12</b>	230 - 240VAC (50/60Hz AC)								
GMC-9M-10-480	<b>\$12</b>	480VAC (50/60Hz AC)								
GMD-9M-10-12	<b>\$14</b>	12VDC								
GMD-9M-10-24	<b>\$14</b>	24VDC								
<b>12 Amp, Screw Terminals</b>										
GMC-12M-10-24	<b>\$13</b>	24VAC (50/60Hz AC)	1 N.O.	20A	1HP (16A)	2HP (12A)	3HP (9.6A)	7.5HP (11A)	7.5HP (9A)	GTK-12M
GMC-12M-10-120	<b>\$13</b>	120VAC (50/60Hz AC)								
GMC-12M-10-208	<b>\$13</b>	200 - 208VAC (50/60Hz AC)								
GMC-12M-10-230	<b>\$13</b>	230 - 240VAC (50/60Hz AC)								
GMC-12M-10-480	<b>\$13</b>	480VAC (50/60Hz AC)								
GMD-12M-10-12	<b>\$15</b>	12VDC								
GMD-12M-10-24	<b>\$15</b>	24VDC								

## Full Featured Contactor and Overload



## Mini Thermal Overload Relays

**Features:**

- Direct Mounting to Meta-Mec Mini Contactors
- UL508 compliant
- Screw terminals
- Differential current
- UL and CE certified
- RoHS compliant
- Built-in auxiliary contacts (1 N.O., 1 N.C.)



Part Number	Current Range	Price	Applicable Contactor
GTK-12M-0.16A	0.1-0.16A	<b>\$16</b>	GMC-6M GMC-9M GMC-12M GMD-6M GMD-9M GMD-12M
GTK-12M-0.25A	0.16-0.25A	<b>\$16</b>	
GTK-12M-0.4A	0.25-0.4A	<b>\$16</b>	
GTK-12M-0.63A	0.4-0.63A	<b>\$16</b>	
GTK-12M-1.0A	0.63-1A	<b>\$16</b>	
GTK-12M-1.6A	1-1.6A	<b>\$16</b>	
GTK-12M-2.5A	1.6-2.5A	<b>\$16</b>	
GTK-12M-4A	2.5-4A	<b>\$16</b>	
GTK-12M-6A	4-6A	<b>\$16</b>	
GTK-12M-8A	5-8A	<b>\$16</b>	
GTK-12M-9A	6-9A	<b>\$16</b>	
GTK-12M-10A	7-10A	<b>\$16</b>	
GTK-12M-13A	9-13A	<b>\$16</b>	

To order call **1.800.972.0436** or visit **factorymation.com**

No Games, No Gimmicks...  
...Just Great Products at Great Prices!!!

**Mini Series Accessories**

Part Number	Description	Price
<b>Auxiliary Contacts</b>		
AU-1M-10	Side-mount, 1 N.O., GMC-6 to GMC-12	\$2
AU-1M-01	Side-mount, 1 N.C., GMC-6 to GMC-12	\$2
AU-2M-20	Top-mount, 2 N.O., GMC-6 to GMC-12	\$4
AU-2M-11	Top-mount, 1 N.O. / 1 N.C., GMC-6 to GMC-12	\$4
AU-2M-02	Top-mount, 2 N.C., GMC-6 to GMC-12	\$4
AU-4M-40	Top-mount, 4 N.O., GMC-6 to GMC-12	\$5
AU-4M-22	Top-mount, 2 N.O. / 2 N.C., GMC-6 to GMC-12	\$5
AU-4M-04	Top-mount, 4 N.C., GMC-6 to GMC-12	\$5
<b>Direct Adapters for Manual Motor Starter + Contactor</b>		
DA-16HA	MMS-32H + GMC-xM (AC coil version)	\$7
DA-16HD	MMS-32H + GMD-xM (DC coil version)	\$7
<b>Mechanical Interlocks and Reversing Kits for GMC-6 to GMC-12</b>		
AR-12M	Mechanical Interlock for Reversing Configuration	\$2
AR-12MW	Mechanical Interlock and Reversing Wire Kit	\$8
<b>Contactor Plug-in Coil Surge Suppressors</b>		
AS-12M-1	GMC-6 to GMC-12, 24-48VAC, Varistor	\$1
AS-12M-2	GMC-6 to GMC-12, 60-127VAC, Varistor	\$1
AS-12M-3	GMC-6 to GMC-12, 200-240VAC, Varistor	\$1
AS-12M-4	GMD-6 to GMD-12, 12-24VDC, Varistor	\$1
<b>ON Delay and OFF Delay Timer Units</b>		
AT-12M-1N	Timer Unit, ON Delay, 0.1-30s, 24 to 48V AC/DC	\$45
AT-12M-1F	Timer Unit, OFF Delay, 0.1-30s, 24 to 48V AC/DC	\$45
AT-12M-2N	Timer Unit, ON Delay, 0.1-30s, 100 to 220V AC/DC	\$45
AT-12M-2F	Timer Unit, OFF Delay, 0.1-30s, 100 to 220V AC/DC	\$45
<b>Overload Separate Mount Units</b>		
AZ-12MH	Separate Mount Unit for GTK12M Overloads	\$5

**Auxiliary Contacts**



AU-1M

**Reversing Kit**



AR-12MW

**Separate Mount Unit**



AZ-12MH  
(Shown attached to GTK12M overload)



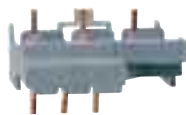
AU-2M

**Time Delay Unit**



AT-12M

**Direct Mount Adapter**



DA-16HA  
(Direct Adapter connects Mini Contactor and Manual Motor Starter, MMS-32H)

**Mini Contactor and Overload Specifications**

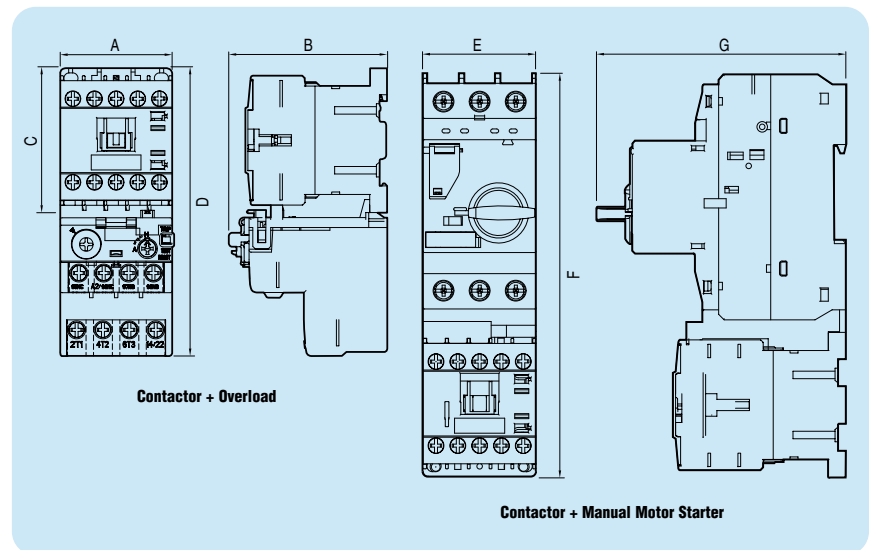
Contactor	AC Coil DC Coil	GMC-6M GMD-6M	GMC-9M GMD-9M	GMC-12M GMD-12M
Number of poles		3 pole		
Rated insulation voltage, UI		690V		
Short circuit max current		5kA		
Breaking capacity		60A	90A	120A
Maximum operations per hour (AC3)		1800		
Mechanical durability		12 million operations		
Electrical durability		1 million operations		
Auxiliary Contacts (Standard)		1 N.O.		
Thermal Magnetic Overload		GTK-12M		
Rated insulation voltage, UI		690V		
Trip class		Class 10		
Protection type		Differential, Phase Loss, Over Current		
Auxiliary Contacts (Standard)		1 N.O. / 1 N.C.		

**Coil Current Consumption for Mini Contactors**

Part Number		AC Coil			DC Coil		
		GMC-6M	GMC-9M	GMC-12M	GMD-6M	GMD-9M	GMD-12M
Standard Voltages	50/60Hz/DC	24 - 480V			12-24V		
Operating Voltage Limits	Pick-up	80 - 110%			80 - 110%		
	Drop-out	30 - 40%			10 - 30%		
Coil Consumption	Inrush	32VA	32VA	32VA	3W	3W	3W
	Sealed	6VA	6VA	6VA	3W	3W	3W
Thermal Dissipation	Watts	2	2	2	3	3	3

**Mini Contactor Dimensions**

Contactor	A	B	C	D	E	F	G
GMC-xM	1.77" (45mm)	2.51" (63.7mm)	2.28" (58mm)	4.57" (116.1mm)	1.77" (45mm)	6.52" (165.7mm)	3.92" (99.6mm)



**FREE Ground Shipping!\***  
for online orders over \$500



# CONTACTORS AND OVERLOADS



Formerly LG Industrial Systems



22 Amp

from **\$14**



**Features:**

- DIN Rail-Mountable (through 150A)
- UL508 Compliant
- 0.5HP to 600HP
- Direct-Mounting Overload Relays
- UL and CE Certified
- RoHS Compliant
- Auxiliary Contacts Standard

**Optional Accessories Include:**

- Additional Auxiliary Contact Blocks
- Replacement Coils
- Reverse Wiring Kits and Interlocks
- Direct Wiring Adapters for MMS
- Coil Surge Suppression
- Remote Reset

32 - 40 Amp



Removable Aux Contacts

50 - 65 Amp



Removable Aux Contacts

## Metasol Contactors (9 - 800A)

**Metasol**

Part Number	Price	Coil Voltage	Aux. Contacts	Resistive Load (AC1)	UL HP Ratings (AC3 Motor Load)						Optional O/L Relay
					Single Phase		Three Phase				
					115V	230V	200V	230V	460V	575V	
<b>22 Amp Frame, Screw Clamp Terminals</b>											
MC-9B-11-AC24	\$14	24VAC (50/60Hz)	1 N.O. 1 N.C.	25	0.5HP (9.8A)	1.5HP (10A)	2HP (7.5A)	3HP (9.6A)	5HP (7.6A)	7.5HP (9A)	MT-32
MC-9B-11-AC120	\$14	120VAC (50/60Hz)									
MC-9B-11-AC208	\$14	208VAC (60Hz)									
MC-9B-11-AC230	\$14	230VAC (50/60Hz)									
MC-9B-11-AC480	\$14	480VAC (60Hz)									
MC-9B-11-DC24	\$15	24VDC									
MC-12B-11-AC24	\$16	24VAC (50/60Hz)	1 N.O. 1 N.C.	25	0.75HP (13.8A)	2HP (12A)	3HP (10.6A)	5HP (15.2A)	7.5HP (11A)	10HP (11A)	MT-32
MC-12B-11-AC120	\$16	120VAC (50/60Hz)									
MC-12B-11-AC208	\$16	208VAC (60Hz)									
MC-12B-11-AC230	\$16	230VAC (50/60Hz)									
MC-12B-11-AC480	\$16	480VAC (60Hz)									
MC-12B-11-DC24	\$20	24VDC									
MC-18B-11-AC24	\$26	24VAC (50/60Hz)	1 N.O. 1 N.C.	40	1HP (16A)	3HP (17A)	5HP (16.7A)	7.5HP (22A)	10HP (14A)	15HP (17A)	MT-32
MC-18B-11-AC120	\$26	120VAC (50/60Hz)									
MC-18B-11-AC208	\$26	208VAC (60Hz)									
MC-18B-11-AC230	\$26	230VAC (50/60Hz)									
MC-18B-11-AC480	\$26	480VAC (60Hz)									
MC-18B-11-DC24	\$29	24VDC									
MC-22B-11-AC24	\$26	24VAC (50/60Hz)	1 N.O. 1 N.C.	40	2HP (24A)	3HP (17A)	7.5HP (24.2A)	10HP (28A)	15HP (21A)	20HP (22A)	MT-32
MC-22B-11-AC120	\$26	120VAC (50/60Hz)									
MC-22B-11-AC208	\$26	208VAC (60Hz)									
MC-22B-11-AC230	\$26	230VAC (50/60Hz)									
MC-22B-11-AC480	\$26	480VAC (60Hz)									
MC-22B-11-DC24	\$33	24VDC									
<b>40 Amp Frame, Screw Clamp Terminals</b>											
MC-32A-22-AC24	\$33	24VAC (50/60Hz)	2 N.O. 2 N.C.	50	2HP (24A)	5HP (28A)	7.5HP (24.2A)	10HP (28A)	20HP (27A)	25HP (27A)	MT-32
MC-32A-22-AC120	\$33	120VAC (50/60Hz)									
MC-32A-22-AC208	\$33	208VAC (60Hz)									
MC-32A-22-AC230	\$33	230VAC (50/60Hz)									
MC-32A-22-AC480	\$33	480VAC (60Hz)									
MC-32A-22-DC24	\$41	24VDC									
MC-40A-22-AC24	\$40	24VAC (50/60Hz)	2 N.O. 2 N.C.	60	3HP (34A)	7.5HP (40A)	15HP (46.2A)	15HP (54A)	30HP (40A)	30HP (41A)	MT-32
MC-40A-22-AC120	\$40	120VAC (50/60Hz)									
MC-40A-22-AC208	\$40	208VAC (60Hz)									
MC-40A-22-AC230	\$40	230VAC (50/60Hz)									
MC-40A-22-AC480	\$40	480VAC (60Hz)									
MC-40A-22-DC24	\$48	24VDC									
<b>65 Amp Frame, Box Lug Terminals</b>											
MC-50A-22-AC24	\$55	24VAC (50/60Hz)	2 N.O. 2 N.C.	70	3HP (34A)	10HP (50A)	20HP (59.4A)	25HP (68A)	40HP (52A)	50HP (52A)	MT-63
MC-50A-22-AC120	\$55	120VAC (50/60Hz)									
MC-50A-22-AC208	\$55	208VAC (60Hz)									
MC-50A-22-AC230	\$55	230VAC (50/60Hz)									
MC-50A-22-AC480	\$55	480VAC (60Hz)									
MC-50A-22-DC24	\$60	24VDC									
MC-65A-22-AC24	\$59	24VAC (50/60Hz)	2 N.O. 2 N.C.	100	5HP (56A)	15HP	25HP (74.8A)	30HP (80A)	50HP (65A)	60HP (62A)	MT-63
MC-65A-22-AC120	\$59	120VAC (50/60Hz)									
MC-65A-22-AC208	\$59	208VAC (60Hz)									
MC-65A-22-AC230	\$59	230VAC (50/60Hz)									
MC-65A-22-AC480	\$59	480VAC (60Hz)									
MC-65A-22-DC24	\$68	24VDC									

# Contactors and Overloads (cont'd)



**Metasol**

## 75 - 100 Amp



Removable Aux Contacts

## 130 - 150 Amp



Removable Aux Contacts

## 185 - 225 Amp



## 500 - 800 Amp



## Metasol Contactors (9 - 800A)

Part Number	Price	Coil Voltage	Aux. Contacts	Resistive Load (AC1)	UL HP Ratings (AC3 Motor Load)						Optional Overload Relay
					Single Phase		Three Phase				
					115V	230V	200V	230V	460V	575V	
<b>100 Amp Frame, Box Lug Terminals</b>											
MC-75A-22-AC24	<b>\$60</b>	24VAC (50/60Hz)	2 N.O. 2 N.C.	110	5HP (56A)	15HP (68A)	25HP (78A)	30HP (80A)	50HP (65A)	60HP (62A)	MT-95
MC-75A-22-AC120	<b>\$60</b>	120VAC (50/60Hz)									
MC-75A-22-AC208	<b>\$60</b>	208VAC (60Hz)									
MC-75A-22-AC230	<b>\$60</b>	230VAC (50/60Hz)									
MC-75A-22-AC480	<b>\$60</b>	480VAC (60Hz)									
MC-75A-22-DC24	<b>\$69</b>	24VDC									
MC-85A-22-AC24	<b>\$61</b>	24VAC (50/60Hz)	2 N.O. 2 N.C.	135	7.5HP (80A)	15HP (68A)	30HP (88A)	40HP (104A)	60HP (77A)	75HP (77A)	MT-95
MC-85A-22-AC120	<b>\$61</b>	120VAC (50/60Hz)									
MC-85A-22-AC208	<b>\$61</b>	208VAC (60Hz)									
MC-85A-22-AC230	<b>\$61</b>	230VAC (50/60Hz)									
MC-85A-22-AC480	<b>\$61</b>	480VAC (60Hz)									
MC-85A-22-DC24	<b>\$76</b>	24VDC									
MC-100A-22-AC24	<b>\$125</b>	24VAC (50/60Hz)	2 N.O. 2 N.C.	160	10HP (100A)	20HP (56A)	30HP (88A)	40HP (104A)	75HP (96A)	75HP (77A)	MT-95
MC-100A-22-AC120	<b>\$125</b>	120VAC (50/60Hz)									
MC-100A-22-AC208	<b>\$125</b>	208VAC (60Hz)									
MC-100A-22-AC230	<b>\$125</b>	230VAC (50/60Hz)									
MC-100A-22-AC480	<b>\$125</b>	480VAC (60Hz)									
MC-100A-22-DC24	<b>\$150</b>	24VDC									
<b>150 Amp Frame, Box Lug Terminals</b>											
MC-130A-22-AC24	<b>\$193</b>	24VAC (50/60Hz)	2 N.O. 2 N.C.	160	10HP (100A)	20HP (88A)	40HP (120A)	40HP (104A)	75HP (96A)	75HP (77A)	MT-150
MC-130A-22-AC120	<b>\$193</b>	120VAC (50/60Hz)									
MC-130A-22-AC230	<b>\$193</b>	230VAC (50/60Hz)									
MC-130A-22-AC480	<b>\$193</b>	480VAC (50/60Hz)									
MC-130A-22-DC24	<b>\$315</b>	24VDC									
MC-150A-22-AC24	<b>\$221</b>	24VAC (50/60Hz)	2 N.O. 2 N.C.	210	15HP (135A)	25HP (110A)	40HP (120A)	50HP (130A)	100HP (124A)	75HP (77A)	MT-150
MC-150A-22-AC120	<b>\$221</b>	120VAC (50/60Hz)									
MC-150A-22-AC230	<b>\$221</b>	230VAC (50/60Hz)									
MC-150A-22-AC480	<b>\$221</b>	480VAC (50/60Hz)									
MC-150A-22-DC24	<b>\$352</b>	24VDC									
<b>225 Amp Frame, Screw Terminals</b>											
MC-185A-22-AC/DC24	<b>\$294</b>	24VAC/24VDC	2 N.O. 2 N.C.	230	15HP (135A)	30HP (136A)	60HP (177A)	60HP (154A)	125HP (156A)	125HP (125A)	MT-225
MC-185A-22-AC/DC100-200	<b>\$294</b>	100-240VAC/100-220VDC									
MC-185A-22-AC500	<b>\$294</b>	440-575VAC									
MC-225A-22-AC/DC24	<b>\$356</b>	24VAC/24VDC	2 N.O. 2 N.C.	275	15HP (135A)	40HP (176A)	60HP (177A)	75HP (192A)	150HP (180A)	150HP (144A)	MT-225
MC-225A-22-AC/DC100-200	<b>\$356</b>	100-240VAC/100-220VDC									
MC-225A-22-AC500	<b>\$356</b>	440-575VAC									
<b>400 Amp Frame, Screw Terminals</b>											
MC-265A-22-AC/DC100-200	<b>\$471</b>	100-240VAC/100-220VDC	2 N.O. 2 N.C.	300	N/A	N/A	75HP (221A)	100HP (248A)	200HP (240A)	200HP (192A)	MT-400
MC-265A-22-AC400	<b>\$471</b>	380-450VAC									
MC-265A-22-AC500	<b>\$471</b>	440-575VAC									
MC-330A-22-AC/DC100-200	<b>\$489</b>	100-240VAC/100-220VDC	2 N.O. 2 N.C.	350	N/A	N/A	100HP (285A)	125HP (312A)	250HP (302A)	250HP (242A)	MT-400
MC-330A-22-AC400	<b>\$489</b>	380-450VAC									
MC-330A-22-AC500	<b>\$489</b>	440-575VAC									
MC-400A-22-AC/DC100-200	<b>\$530</b>	100-240VAC/100-220VDC	2 N.O. 2 N.C.	450	N/A	N/A	125HP (359A)	150HP (360A)	300HP (361A)	300HP (289A)	MT-400
MC-400A-22-AC400	<b>\$530</b>	380-450VAC									
MC-400A-22-AC500	<b>\$530</b>	440-575VAC									
<b>800 Amp Frame, Screw Terminals</b>											
MC-500A-22-AC/DC100	<b>\$1,107</b>	100-127VAC/100-110VDC	2 N.O. 2 N.C.	580	N/A	N/A	150HP (414A)	200HP (480A)	400HP (477A)	400HP (382A)	MT-800
MC-500A-22-AC/DC200	<b>\$1,107</b>	200-240VAC/200-220VDC									
MC-500A-22-AC500	<b>\$1,107</b>	440-575VAC									
MC-630A-22-AC/DC100	<b>\$1,149</b>	100-127VAC/100-110VDC	2 N.O. 2 N.C.	660	N/A	N/A	200HP (552A)	250HP (602A)	500HP (590A)	500HP (472A)	MT-800
MC-630A-22-AC/DC200	<b>\$1,149</b>	200-240VAC/200-220VDC									
MC-630A-22-AC500	<b>\$1,149</b>	440-575VAC									
MC-800A-22-AC/DC100	<b>\$1,216</b>	100-127VAC/100-110VDC	2 N.O. 2 N.C.	900	N/A	N/A	200HP (552A)	300HP	600HP	600HP	MT-800
MC-800A-22-AC/DC200	<b>\$1,216</b>	200-240VAC/200-220VDC									
MC-800A-22-AC500	<b>\$1,216</b>	440-575VAC									



**FREE Ground Shipping!**  
for online orders over \$500



### Thermal Overload Relays

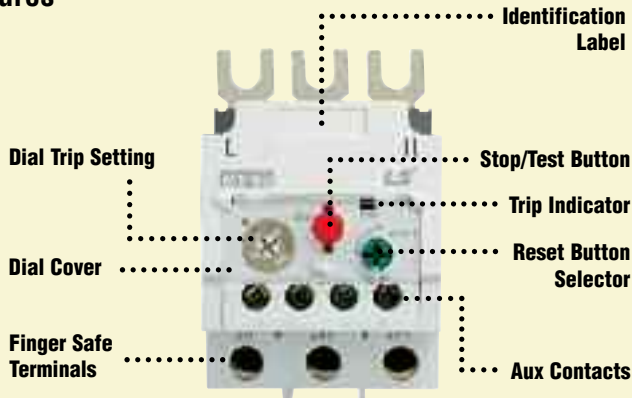
- Trip ranges from 0.1A to 800A
- Direct mounting to Metasol contactors
- Separate mount adapter available (through MT-150)
- Optional lug terminals for screw terminal versions, ordered separately
- Ambient Compensated -5° to 40°C
- Manual / Automatic Reset
- Differential Current / Phase Loss Protection
- Auxiliary contacts Included
- Trip Class 10
- UL and CE Certified

from **\$22**



Part Number	Aux Contacts	Current Range	Price	Applicable Contactor
MT-32S-0.16A	1 N.O. / 1N.C.	0.1-0.16A	\$22	MC-9B MC-12B MC-18B MC-22B MC-32A MC-40A
MT-32S-0.25A	1 N.O. / 1N.C.	0.16-0.25A	\$22	
MT-32S-0.4A	1 N.O. / 1N.C.	0.25-0.4A	\$22	
MT-32S-0.63A	1 N.O. / 1N.C.	0.4-0.63A	\$22	
MT-32S-1A	1 N.O. / 1N.C.	0.63-1A	\$22	
MT-32S-1.6A	1 N.O. / 1N.C.	1-1.6A	\$22	
MT-32S-2.5A	1 N.O. / 1N.C.	1.6-2.5A	\$22	
MT-32S-4A	1 N.O. / 1N.C.	2.5-4A	\$22	
MT-32S-6A	1 N.O. / 1N.C.	4-6A	\$22	
MT-32S-8A	1 N.O. / 1N.C.	5-8A	\$22	
MT-32S-9A	1 N.O. / 1N.C.	6-9A	\$22	
MT-32S-10A	1 N.O. / 1N.C.	7-10A	\$22	
MT-32S-13A	1 N.O. / 1N.C.	9-13A	\$22	
MT-32S-18A	1 N.O. / 1N.C.	12-18A	\$22	
MT-32S-22A	1 N.O. / 1N.C.	16-22A	\$22	
MT-32S-25A	1 N.O. / 1N.C.	18-25A	\$22	
MT-32S-32A	1 N.O. / 1N.C.	22-32A	\$29	
MT-32S-40A	1 N.O. / 1N.C.	28-40A	\$29	
MT-63L-36A	1 N.O. / 1N.C.	24-36A	\$42	MC-50A MC-65A
MT-63L-40A	1 N.O. / 1N.C.	28-40A	\$42	
MT-63L-50A	1 N.O. / 1N.C.	34-50A	\$42	
MT-63L-65A	1 N.O. / 1N.C.	45-65A	\$42	
MT-95L-65A	1 N.O. / 1N.C.	45-65A	\$46	MC-75A MC-85A MC-100A
MT-95L-75A	1 N.O. / 1N.C.	54-75A	\$46	
MT-95L-85A	1 N.O. / 1N.C.	63-85A	\$46	
MT-95L-95A	1 N.O. / 1N.C.	70-95A	\$46	
MT-95L-100A	1 N.O. / 1N.C.	80-100A	\$64	
MT-150-105A	1 N.O. / 1N.C.	80-105A	\$125	MC-130A MC-150A
MT-150-130A	1 N.O. / 1N.C.	95-130A	\$125	
MT-150-150A	1 N.O. / 1N.C.	110-150A	\$125	
MT-225-160A	1 N.O. / 1N.C.	100-160A	\$141	MC-185A MC-225A
MT-225-185A	1 N.O. / 1N.C.	120-185A	\$141	
MT-225-240A	1 N.O. / 1N.C.	160-240A	\$141	
MT-400-240A	1 N.O. / 1N.C.	160-240A	\$190	MC-265A MC-330A MC-400A
MT-400-330A	1 N.O. / 1N.C.	200-330A	\$190	
MT-400-400A	1 N.O. / 1N.C.	260-400A	\$190	
MT-800-400A	1 N.O. / 1N.C.	260-400A	\$432	MC-500A MC-630A MC-800A
MT-800-630A	1 N.O. / 1N.C.	400-630A	\$432	
MT-800-800A	1 N.O. / 1N.C.	520-800A	\$432	

### Features



### Direct Mounting



MC-40 & MT-32



MC-400 & MT-400

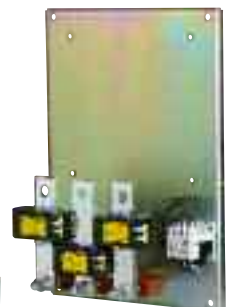
MT-63



MT-225



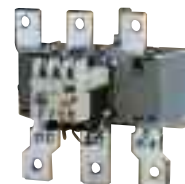
MT-800



MT-95



MT-400



MT-150



Contactor and Overload Accessories



Auxiliary Contact  
UA-1-11



MMS Direct Adapter  
DA-95A



MMS + Contactor  
Mounting Unit  
MU-45



Mechanical Interlock  
with Aux Contact  
UR-02



Surge Suppressor  
US-2

Part Number	Description	Price
<b>Auxiliary Contacts</b>		
UA-1-11	Side-mount, 1 N.O. / 1 N.C., MC-9 to MC-150	\$6
UA-2-11	Top-mount, 1 N.O. / 1 N.C., MC-9 to MC-150	\$6
UA-4-22	Top-mount, 2 N.O. / 2 N.C., MC-9 to MC-150	\$13
UA-4-40	Top-mount, 4 N.O., MC-9 to MC-150	\$13
UA-4-04	Top-mount, 4 N.C., MC-9 to MC-150	\$13
AU-100-11	Side-mount, 1 N.O. / 1 N.C., MC-185 to MC-800	\$6
AU-100E-11	Side-mount, 1 N.O. / 1 N.C., MC-185 to MC-800	\$6
<b>MMS + Contactor Direct Adapters</b>		
DA-22HA	MMS-32H + MC-9B-22B AC	\$7
DA-22HD	MMS-32H + MC-9B-22B DC	\$7
DA-32HA	MMS-32H + MC-32A-40A AC	\$7
DA-32HD	MMS-32H + MC-32A-40A DC	\$7
DA-63A	MMS-63H + MC-50A to MC-65A AC	\$8
DA-63D	MMS-63H + MC-50A to MC-65A DC	\$8
DA-95A	MMS-100H + MC-75A to MC-100A AC	\$10
DA-95D	MMS-100H + MC-75A to MC-100A DC	\$10
<b>MMS + Contactor Mounting Unit / Base Plate</b>		
MU-45	MMS-32H + MC-9 to MC-40 (45mm)	\$12
MU-55	MMS-63H + MC-50 to MC-65 (55mm)	\$15
MU-70	MMS100H + MC-75 to MC-100 (70mm)	\$16
<b>Reversing Kits</b>		
UR-02	Mechanical Interlock, 2 N.C., MC-9 to MC-150	\$10
UW-22	Reversing Wire Kit for MC-9 to MC-22	\$10
UW-32	Reversing Wire Kit for MC-32 to MC-40	\$10
UW-63	Reversing Wire Kit for MC-50 to MC-65	\$16
UW-95	Reversing Wire Kit for MC-75 to MC-100	\$30
<b>Contactor Coil Surge Suppressors</b>		
US-1	MC-9 to MC-150, AC24-48V, Varistor + RC	\$7
US-2	MC-9 to MC-150, AC100-125V, Varistor + RC	\$7
US-3	MC-9 to MC-150, AC200-240V, Varistor + RC	\$7
US-4	MC-9 to MC-150, DC24-48V, Varistor + RC	\$7
US-5	MC-9 to MC-150, DC100-125V, Varistor + RC	\$7
US-6	MC-9 to MC-150, DC200-220V, Varistor + RC	\$7
US-11	MC-9 to MC-150, ACDC24-48V, Varistor	\$5
US-12	MC-9 to MC-150, ACDC100-125V, Varistor	\$5
US-13	MC-9 to MC-150, ACDC200-240V, Varistor	\$5
US-14	MC-9 to MC-150, ACDC380-440V, Varistor	\$5
US-22	MC-9 to MC-150, AC100-125V, RC	\$5
<b>Overload Remote Reset Kits</b>		
UM-4R	400mm cable, MT-12 to MT-95	\$38
UM-5R	500mm cable, MT-12 to MT-95	\$41
UM-6R	600mm cable, MT-12 to MT-95	\$46
<b>Overload Separate Mount Units</b>		
AZ-12MH	for MT-12 Overload	\$5
UZ-32S	for MT-32S Overload	\$6
UZ-63L	for MT-63L Overload	\$7
UZ-95L	for MT-95L Overload	\$9
UZ-150S	for MT-150 Overload, MT-150	\$9

Part Number	Description	Price
<b>Terminal Covers</b>		
AP-220	Terminal cover (2 pcs), MC185a-225a, GMC180-220 (input and output)	\$9
AP-400	Terminal cover (2 pcs), MC265a-400a, GMC300-400 (input and output)	\$10
AP-800	Terminal cover (2 pcs), MC500a-800a, GMC600-800 (input and output)	\$21
APT-220	Terminal cover assembly, MT-225, GTK-220	\$4
APT-400	Terminal cover assembly, MT-400, GTK-400	\$4
APT-600	Terminal cover assembly, GTK-600, GMS-600/800	\$33
<b>Mechanical Interlocks</b>		
AR-180	Mechanical Interlock, MC180a-400a, MC100a/4-400a/4, GMC180-400	\$21
AR-600	Mechanical Interlock, MC500a-800a, MC500a/4-800a/4, GMC600-800	\$295
<b>Reversing Base Plates</b>		
RBP-180/220	Reversing Base Plate Interlock, GMC-180/220R	\$36
RBP-300/400	Reversing Base Plate Interlock, GMC-300/400R	\$48
<b>Insulation Barriers</b>		
AI-180	Insulation Barrier (4pcs.), MC185a-400a, GMC180-400	\$3
AI-600	Insulation Barrier (4pcs.), MC500a-800a, GMC600-800	\$3
<b>Lug Terminals</b>		
AJ-220	Lug Terminals for MC-185A to MC-225A (3 pcs)	\$42
AJ-400	Lug Terminals for MC-265A to MC-400A (3 pcs)	\$83
AJ-800	Lug Terminals for MC-500A to MC-800A (3 pcs)	\$156

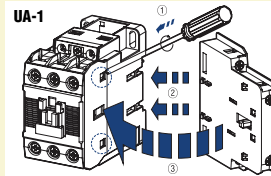


Terminal Cover  
AP220

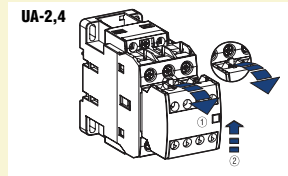


Lug Terminals  
AJ150

Installing Auxiliary Contacts



To install side-mounting aux contacts remove the indicated part in the circle first. Then fit each part as shown. To separate, pull forward and pull.



To install top-mounting aux contacts position on top of contactor and push down. To separate, pull the lever of the contact block and push upward.



Remote Reset Cable  
UM-4R

O/L Separate Mount  
UZ-32S  
(Shown with O/L)



**FREE Ground Shipping!\***  
for online orders over \$500



## Replacement Coils for Metasol Contactors

Replacement Coil  
S-C1-DCReplacement Coil  
S-C2-ACReplacement Coil  
S-C3-ACReplacement Coil  
S-C4-DC

Metasol Contactor Replacement Coils		
Part Number	Input Rating	Price
<b>MC-9 to MC-22</b>		
S-C1-AC24DF	AC24V 50/60Hz	\$10
S-C1-AC120DF	AC120V 50/60Hz	\$10
S-C1-AC208	AC208V 60Hz	\$10
S-C1-AC230DF	AC230V 50/60Hz	\$10
S-C1-AC277	AC277V 60Hz	\$10
S-C1-AC480	AC480V 60Hz	\$10
S-C1-DC12	DC12V	\$13
S-C1-DC24	DC24V	\$13
<b>MC-32 to MC-40</b>		
S-C2-AC24DF	AC24V 50/60Hz	\$11
S-C2-AC120DF	AC120V 50/60Hz	\$11
S-C2-AC208	AC208V 60Hz	\$11
S-C2-AC230DF	AC230V 50/60Hz	\$11
S-C2-AC277	AC277V 60Hz	\$11
S-C2-AC480	AC480V 60Hz	\$11
S-C2-DC12	DC12V	\$15
S-C2-DC24	DC24V	\$15
<b>MC-50 to MC-65</b>		
S-C3-AC24DF	AC24V 50/60Hz	\$14
S-C3-AC120DF	AC120V 50/60Hz	\$14
S-C3-AC208	AC208V 60Hz	\$14
S-C3-AC230DF	AC230V 50/60Hz	\$14
S-C3-AC277	AC277V 60Hz	\$14
S-C3-AC480	AC480V 60Hz	\$14
S-C3-DC12	DC12V	\$18
S-C3-DC24	DC24V	\$18
<b>MC-75 to MC-100</b>		
S-C4-AC24DF	AC24V 50/60Hz	\$18
S-C4-AC120DF	AC120V 50/60Hz	\$18
S-C4-AC208	AC208V 60Hz	\$18
S-C4-AC230DF	AC230V 50/60Hz	\$18
S-C4-AC277	AC277V 60Hz	\$18
S-C4-AC480	AC480V 60Hz	\$18
S-C4-DC12	DC12V	\$22
S-C4-DC24	DC24V	\$22

NOTE: AC and DC coils are not interchangeable.

Replacement Coil  
S-C6-ACReplacement Coil  
S-C7-ACReplacement Coil  
S-C8-AC

Metasol Contactor Replacement Coils		
Part Number	Input Rating	Price
<b>MC-130 to MC-150</b>		
S-C5-AC24	24VAC 50/60Hz	\$83
S-C5-AC110	110VAC 50/60Hz	\$83
S-C5-AC220	220-240VAC 50/60Hz	\$83
S-C5-AC400	400-440VAC 50/60Hz	\$83
S-C5-AC500	500VAC 50/60Hz	\$83
S-C5-DC24	24VDC	\$83
S-C5-DC110	110VDC	\$83
S-C5-DC220	220VDC	\$83
<b>MC-185 to MC-225</b>		
S-C6-ACDC24	24VAC (50/60Hz) / 24VDC	\$92
S-C6-ACDC100/200	100-240VAC (50/60Hz) / 100-220VDC	\$92
S-C6-ACDC500	440-575VAC (50/60Hz)	\$92
<b>MC-265 to MC-400</b>		
S-C7-AC/DC100-200	100-240VAC (50/60Hz) / 100-220VDC	\$143
S-C7-AC400	380-450VAC	\$143
S-C7-AC500	440-575VAC	\$143
<b>MC-500 to MC-800</b>		
S-C8-AC/DC100	100-127VAC (50/60Hz) / 100-110VDC	\$171
S-C8-AC/DC200	200-240VAC / 200-220VDC	\$171
S-C8-AC400	380-450VAC	\$171
S-C8-AC500	440-575VAC	\$171

## Metasol Contactor and Overload Specifications

Contactor	MC-9B	MC-12B	MC-18B	MC-22B	MC-32A	MC-40A	MC-50A	MC-65A	MC-75A	MC-85L	MC-100L
Number of poles	3 pole										
Rated operational voltage, Ue	690V										
Rated insulation voltage, Ui	690V			1000V			1000V		1000V		
Rated frequency	60Hz										
Rated impulse withstand voltage, Uimp	6kV			8kV			8kV		8kV		
Maximum operations per hour (AC3)	1800			1800			1800		1800		
Mechanical durability	15mil. operations			12mil. operations			12mil. operations		12mil. operations		
Electrical durability	2.5mil. operations			2mil. operations			2mil. operations		2mil. operations		
Auxiliary Contacts (Standard)	1 N.O. / 1 N.C.			2 N.O. / 2 N.C.			2 N.O. / 2 N.C.		2 N.O. / 2 N.C.		
Thermal Magnetic Overload	MT-12		MT-32		MT-32		MT-63		MT-95		
Rated operational voltage, Ue	690V										
Rated insulation voltage, Ui	690V										
Rated impulse withstand voltage, Uimp	6kV										
Trip class	10A										
Setting range	0.1-18A		0.1-40A		0.1-40A		4-65A		7-100A		

Contactor	MC-130A	MC-150A	MC-185A	MC-225A	MC-265A	MC-330A	MC-400A	MC-500A	MC-630A	MC-800A
Number of poles	3 pole									
Rated operational voltage, Ue	690V									
Rated insulation voltage, Ui	1000V		1000V		1000V			1000V		
Rated frequency*	60 Hz									
Rated impulse withstand voltage, Uimp	8kV		8kV		8kV			8kV		
Maximum operations per hour (AC3)	1200		1200		1200			1200		
Mechanical durability (operations)	5mil.		5mil.		5mil.		2.5mil.		2.5mil.	
Electrical durability (operations)	1mil.		1mil.		1mil.		500k		500k	
Auxiliary Contacts (Standard)	2 N.O. / 2 N.C.		2 N.O. / 2 N.C.		2 N.O. / 2 N.C.			2 N.O. / 2 N.C.		
Thermal Magnetic Overload	MT-150		MT-225		MT-400			MT-800		
Rated operational voltage, Ue	690V									
Rated insulation voltage, Ui	690V									
Rated impulse withstand voltage, Uimp	6kV									
Trip class	10A									
Setting range	34-150A		65-240A		85-400A			200-800A		



**FREE Ground Shipping!\***  
for online orders over \$500

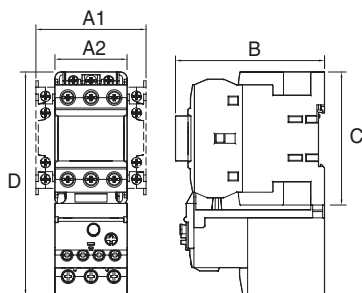


**FactoryMation®**

## Coil Current Consumption

Part Number	MC-9B MC-12B MC-18B MC-22B	MC-32A MC-40A	MC-50A MC-65A	MC-75A MC-85A MC-100A	MC-130A MC-150A	MC-185A MC-225A	MC-265A MC-400A	MC-500A MC-800A	
<b>AC Coil</b>									
Control Voltage	50Hz	24, 120, 230			24, 120, 230, 480	24, 100-240, 440-575	100-240, 380- 450, 440-575	100-127, 200- 240, 440-575	
	60Hz	24, 120, 208, 230, 480							
Voltage Limit	Operational	85-110%							
	Drop-out	30-60%							
Coil Consumption @ 20°C (220V, 60Hz)	Inrush (VA)	56	50	104	216	104	380	571	1,000
	Sealed (VA)	6	9	10	16	21	11.6	14	29
<b>DC Coil</b>									
Control Voltage	DC	12, 24			N/A	N/A	N/A	N/A	
Voltage Limit	Operational	70-110%			N/A	N/A	N/A	N/A	
	Drop-out	10-30%			N/A	N/A	N/A	N/A	
Current Consumption	Inrush (W)	9	7	9	18	N/A	N/A	N/A	
	Sealed (W)	9	7	9	18	N/A	N/A	N/A	

## Metasol Contactor and Overload Dimensions



Contactors	A1	A2	B	C	D
<b>AC Contactors</b>					
MC-9 AC – MC-18 AC	-	1.77" (45mm)	3.44" (87.4mm)	2.89" (73.5mm)	5.11" (129.9mm)
MC-22 AC	-	1.77" (45mm)	3.39" (86mm)	2.89" (73.5mm)	5.11" (129.9mm)
MC-32 AC – MC-40 AC	2.72" (69mm)	1.77" (45mm)	3.54" (90mm)	3.27" (83mm)	5.49" (139.4mm)
MC-50 AC – MC-65 AC	3.11" (79mm)	2.17" (55mm)	4.69" (119mm)	4.17" (106mm)	6.45" (163.8mm)
MC-75 AC – MC-100 AC	3.70" (94mm)	2.76" (70mm)	5.35" (135.8mm)	5.51" (140mm)	8.32" (211.4mm)
MC-130 AC – MC-150 AC	4.69" (119mm)	3.74" (95mm*)	5.13" (130.3mm)	6.22" (158mm)	9.30" (236.2mm)
MC-185 AC/DC – MC-225 AC/DC	6.38" (162mm*)	5.43" (138mm)	7.29" (185.1mm)	7.99" (203mm)	12.07" (306.5mm*)
MC-265 AC/DC – MC-400 AC/DC	7.36" (187mm*)	6.42" (163mm)	8.05" (204.4mm)	9.57" (243mm)	14.96" (380mm*)
MC-500 AC/DC – MC-800 AC/DC	14.17" (360mm*)	11.22" (285mm)	9.66" (245.3mm)	12.28" (312mm)	20.87" (530mm*)
<b>DC Contactors</b>					
MC-9 DC – MC-18 DC	-	1.77" (45mm)	4.63" (117.7mm)	2.89" (73.5mm)	5.11" (129.9mm)
MC-22 DC	-	1.77" (45mm)	4.63" (117.7mm)	2.89" (73.5mm)	5.11" (129.9mm)
MC-32 DC – MC-40 DC	2.72" (69mm)	1.77" (45mm)	4.73" (120.1mm)	3.27" (83mm)	5.49" (139.4mm)
MC-50 DC – MC-65 DC	3.11" (79mm)	2.17" (55mm)	5.87" (149.2mm)	4.17" (106mm)	6.45" (163.8mm)
MC-75 DC – MC-100 DC	3.70" (94mm)	2.76" (70mm)	6.84" (173.8mm)	5.51" (140mm)	8.32" (211.4mm)
MC-130 DC – MC-150 DC	-	3.74" (95mm*)	5.13" (130.3mm)	6.22" (158mm)	9.30" (236.2mm)

\* Mounting plate dimension

## Optional Auxiliary Contact Specifications

Part Number	UA-1-11	UA-2-11	UA-2-20	UA-4-22	UA-4-40	UA-100	UA-100E
Rated Thermal Current (Ith)	AC: 10A	AC: 16A				AC: 1A	
AC-15, A600	120V: 6A, 240V: 3A, 380V: 1.9A 480V: 1.5A, 500V: 1.4A, 600V: 1.2A					AC 24V 0.1A AC 50V 0.01A	
DC-13, P300	125V: 1.1A, 250V: .055A, 400V: 0.31A, 500V: 0.27A, 600V: 0.2A					DC 24V 0.1A DC 50V 0.01A	
Mechanical Endurance	500,000 operations						
Conductor Size	18AWG - 10AWG						