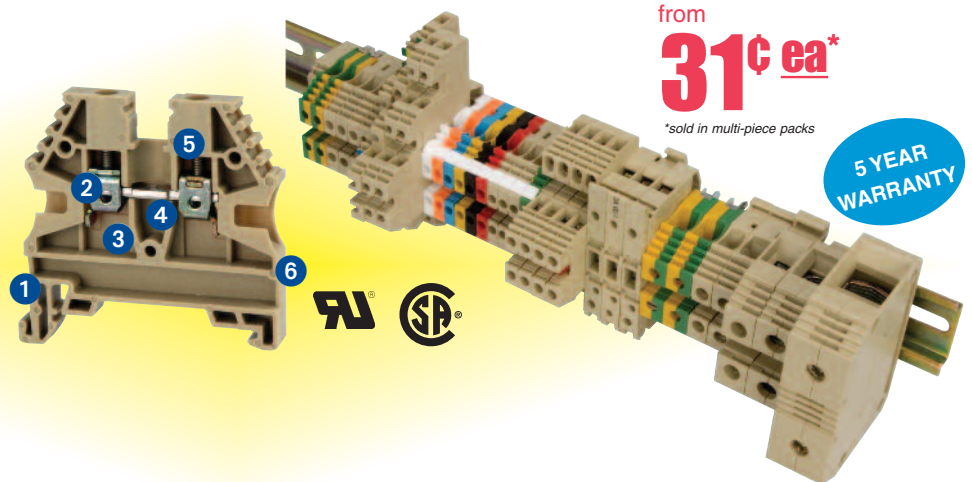


# DIN RAIL TERMINAL BLOCKS

Our terminal blocks are modular, secure, insulated, and include a proven clamping yoke system for quick easy installation. Broad selection and modular design for easy maintenance of control, power, and communication circuits. Manufactured in Europe, these high quality terminal blocks are offered at an outstanding price. Terminal block features include:

- 1 Rugged DIN footing: Double foot support provides a solid foundation and prevents breaking
- 2 Vibration: Screw clamp system has built in protection against loosening
- 3 Wire stops: Prevents wire from being inserted too far
- 4 Internal jumpers: Screws are secured to the busbar for easy installation and increased wiring space
- 5 Captive screws don't get lost during installation
- 6 Wire entry: Finger-safe design



## Feed-through Terminals

Feed through terminal blocks provide one-to-one connections. These terminals are available up to 175 A and accommodate wire sizes 2/0 to 26 AWG. Eight colors are offered to help simplify and organize your control panel.

ER2.5 to ER10

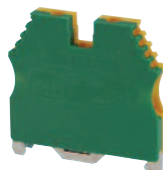


| Cross Section      | 2.5 mm      | 4 mm          | 6 mm                    | 10 mm                   | 16 mm                   | 35 mm                   | 70 mm                   |
|--------------------|-------------|---------------|-------------------------|-------------------------|-------------------------|-------------------------|-------------------------|
| Dimensions (LxWxH) | 44x5x44 mm  | 44x6x44 mm    | 44x8x44 mm              | 44x10x44 mm             | 50x12x56 mm             | 51x16x56 mm             | 74x22x66 mm             |
| I MAX              | 20A         | 30A           | 50A                     | 65A                     | 85A                     | 115A                    | 175A                    |
| V MAX              | 600V        | 600V          | 600V                    | 600V                    | 600V                    | 600V                    | 600V                    |
| WIRE SIZE          | 12 - 26 AWG | 10 - 26 AWG   | 8 - 26 AWG              | 6 - 16 AWG              | 4 - 12 AWG              | 2 - 10 AWG              | 2/0 - 6 AWG             |
| PCS/PKG            | 100         | 100           | 50                      | 25                      | 10                      | 10                      | 10                      |
| PRICE/PKG          | <b>\$31</b> | <b>\$38</b>   | <b>\$29</b>             | <b>\$18</b>             | <b>\$13</b>             | <b>\$18</b>             | <b>\$79</b>             |
| BEIGE              | ER2.5BEIGE  | ER4BEIGE      | ER6                     | ER10                    | ER16                    | ER35                    | ER70                    |
| BLACK              | ER2.5BLACK  | ER4BLACK      | -                       | -                       | -                       | -                       | -                       |
| BLUE               | ER2.5BLUE   | ER4BLUE       | -                       | -                       | -                       | -                       | -                       |
| GREEN              | ER2.5GREEN  | ER4GREEN      | -                       | -                       | -                       | -                       | -                       |
| ORANGE             | ER2.5ORANGE | ER4ORANGE     | -                       | -                       | -                       | -                       | -                       |
| RED                | ER2.5RED    | ER4RED        | -                       | -                       | -                       | -                       | -                       |
| WHITE              | ER2.5WHITE  | ER4WHITE      | -                       | -                       | -                       | -                       | -                       |
| YELLOW             | ER2.5YELLOW | ER4YELLOW     | -                       | -                       | -                       | -                       | -                       |
| END BRACKET        | ES1         | ES1           | ES3                     | ES3                     | ES3                     | ES3                     | ES3                     |
| PCS/PKG            | 20          | 20            | 25                      | 25                      | 25                      | 25                      | 25                      |
| PRICE/PKG          | <b>\$5</b>  | <b>\$5</b>    | <b>\$8</b>              | <b>\$8</b>              | <b>\$8</b>              | <b>\$8</b>              | <b>\$8</b>              |
| END PLATE          | EP2.5-10    | EP2.5-10      | EP2.5-10                | EP2.5-10                | EP16                    | -                       | -                       |
| PCS/PKG            | 25          | 25            | 25                      | 25                      | 25                      | -                       | -                       |
| PRICE/PKG          | <b>\$5</b>  | <b>\$5</b>    | <b>\$5</b>              | <b>\$5</b>              | <b>\$8</b>              | -                       | -                       |
| SMALL SEPARATORS   | SP1BEIGE    | SP1BEIGE      | SP1BEIGE                | SP1BEIGE                | SP1BEIGE                | SP1BEIGE                | SP1BEIGE                |
| PCS/PKG            | 100         | 100           | 100                     | 100                     | 100                     | 100                     | 100                     |
| PRICE/PKG          | <b>\$18</b> | <b>\$18</b>   | <b>\$18</b>             | <b>\$18</b>             | <b>\$18</b>             | <b>\$18</b>             | <b>\$18</b>             |
| JUMPER - 2 pole    | CC2.5/2     | CC4/2         | CC6/2                   | CC10/2                  | CC16/2                  | CC35/2                  | -                       |
| PCS/PKG            | 25          | 25            | 25                      | 25                      | 25                      | 25                      | -                       |
| PRICE/PKG          | <b>\$15</b> | <b>\$24</b>   | <b>\$25</b>             | <b>\$22</b>             | <b>\$28</b>             | <b>\$23</b>             | -                       |
| JUMPER - 10 pole   | CC2.5/10    | CC4/10        | CC6/10                  | CC10/10                 | CC16/10                 | CC35/10                 | -                       |
| PCS/PKG            | 5           | 5             | 5                       | 5                       | 5                       | 5                       | -                       |
| PRICE/PKG          | <b>\$15</b> | <b>\$22</b>   | <b>\$23</b>             | <b>\$24</b>             | <b>\$24</b>             | <b>\$20</b>             | -                       |
| MARKING TAGS       | MT5         | MT5<br>MT10/5 | MT5<br>MT10/5<br>MT10/6 | MT5<br>MT10/5<br>MT10/6 | MT5<br>MT10/5<br>MT10/6 | MT5<br>MT10/5<br>MT10/6 | MT5<br>MT10/5<br>MT10/6 |

## Ground Terminals

Ground terminal blocks mechanically and electrically link wires to the DIN rail by using a metal clamping bar.

ERPE2.5/4



| Part Number | Wire Size | Pcs/Pkg | Price/Pkg   |
|-------------|-----------|---------|-------------|
| ERPE2.5/4   | 26-10 AWG | 10      | <b>\$17</b> |
| ERPE6/10    | 16-8 AWG  | 10      | <b>\$20</b> |

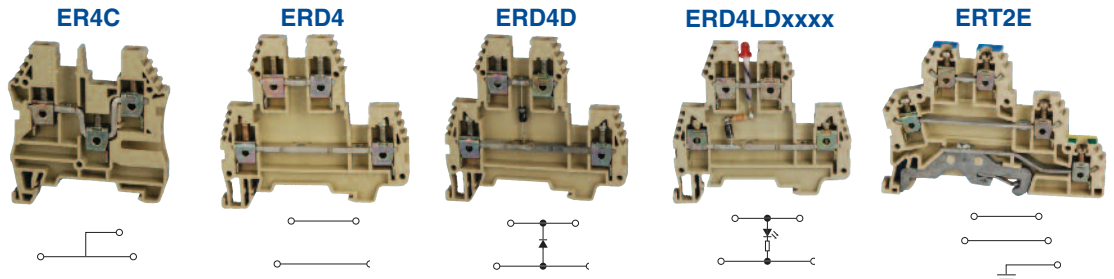
To order call **1.800.972.0436** or visit **factorymation.com**

No Games, No Gimmicks...

...Just Great Products at Great Prices!!!

## Double-level

Double-level terminal blocks offer 2 times the wiring density of a standard feed through terminal block. They are available with LED status indicators and diode protection. Jumpers and marking tags can be used at both levels.

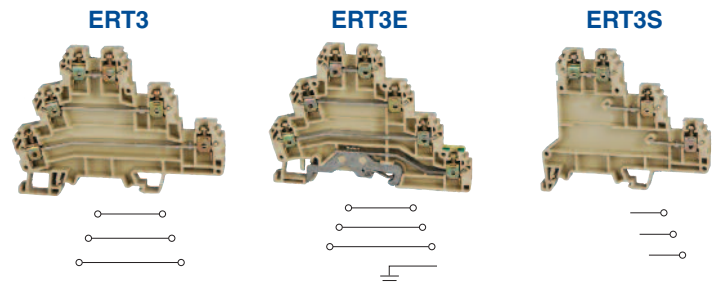


| Part Number        | ER4C           | ERD4                      | ERD4D                | ERD4LD24AC                  | ERD4LD24DC                  | ERD4LD110AC                  | ERT2E                  |
|--------------------|----------------|---------------------------|----------------------|-----------------------------|-----------------------------|------------------------------|------------------------|
| Type               | 1IN-2OUT       | Double-level Feed-through | Double-level w/Diode | Double-level w/ LED - 24VAC | Double-level w/ LED - 24VDC | Double-level w/ LED - 110VAC | Double-level w/ Ground |
| Dimensions (LxWxH) | 51 x 6 x 53 mm | 64 x 4 x 61 mm            | 64 x 4 x 61 mm       | 64 x 4 x 61 mm              | 64 x 4 x 61 mm              | 64 x 4 x 61 mm               | 71 x 4 x 53 mm         |
| I MAX              | 30A            | 32A                       | 30A                  | 30A                         | 30A                         | 30A                          | 24A                    |
| V MAX              | 600V           | 300V                      | 300V                 | 300V                        | 300V                        | 300V                         | 300V                   |
| WIRE SIZE          | 26 - 10AWG     | 26 - 10 AWG               | 26 - 10 AWG          | 26 - 10 AWG                 | 26 - 10 AWG                 | 26 - 10 AWG                  | 26 - 10 AWG            |
| PCS/PKG            | 25             | 25                        | 20                   | 20                          | 20                          | 20                           | 25                     |
| PRICE/PKG          | <b>\$39</b>    | <b>\$31</b>               | <b>\$35</b>          | <b>\$73</b>                 | <b>\$70</b>                 | <b>\$73</b>                  | <b>\$122</b>           |
| END BRACKET        | ES3            | ES3                       | ES3                  | ES3                         | ES3                         | ES3                          | ES3                    |
| PCS/PKG            | 25             | 25                        | 25                   | 25                          | 25                          | 25                           | 25                     |
| PRICE/PKG          | <b>\$8</b>     | <b>\$8</b>                | <b>\$8</b>           | <b>\$8</b>                  | <b>\$8</b>                  | <b>\$8</b>                   | <b>\$8</b>             |
| END PLATE          | EP4C           | EP4                       | EP4                  | EP4                         | EP4                         | EP4                          | EPT2E                  |
| PCS/PKG            | 50             | 25                        | 25                   | 25                          | 25                          | 25                           | 10                     |
| PRICE/PKG          | <b>\$18</b>    | <b>\$15</b>               | <b>\$15</b>          | <b>\$15</b>                 | <b>\$15</b>                 | <b>\$15</b>                  | <b>\$3</b>             |
| SMALL SEPARATORS   | SP1BEIGE       | SP1BEIGE                  | SP1BEIGE             | SP1BEIGE                    | SP1BEIGE                    | SP1BEIGE                     | SP1BEIGE               |
| PCS/PKG            | 100            | 100                       | 100                  | 100                         | 100                         | 100                          | 100                    |
| PRICE/PKG          | <b>\$18</b>    | <b>\$18</b>               | <b>\$18</b>          | <b>\$18</b>                 | <b>\$18</b>                 | <b>\$18</b>                  | <b>\$18</b>            |
| JUMPER - 2 pole    | N/A            | CC4/2                     | CC4/2                | CC4/2                       | CC4/2                       | CC4/2                        | CC2.5/2T               |
| PCS/PKG            |                | 25                        | 25                   | 25                          | 25                          | 25                           | 25                     |
| PRICE/PKG          |                | <b>\$24</b>               | <b>\$24</b>          | <b>\$24</b>                 | <b>\$24</b>                 | <b>\$24</b>                  | <b>\$23</b>            |
| JUMPER - 10 pole   | N/A            | CC4/10                    | CC4/10               | CC4/10                      | CC4/10                      | CC4/10                       | CC2.5/10T              |
| PCS/PKG            |                | 5                         | 5                    | 5                           | 5                           | 5                            | 5                      |
| PRICE/PKG          |                | <b>\$22</b>               | <b>\$22</b>          | <b>\$22</b>                 | <b>\$22</b>                 | <b>\$22</b>                  | <b>\$21</b>            |
| MARKING TAGS       | MT5            | MT5                       | MT5                  | MT5                         | MT5                         | MT5                          | MT5                    |

## Triple-level

Three and four wired elements such as motors, sensors, and actuators are commonly wired using terminal blocks. The triple-level terminal blocks are designed and developed to meet the demanding requirements of 3 or 4 wire applications. Signal, power and ground can be connected on a single, compact 6mm width terminal block. Triple-level terminal blocks offer:

- More practical wiring and panel design
- Reduced installation costs and wiring time
- Individual cross connections for each layer
- Easy identification of positive, negative and ground connections with the help of internationally accepted colors for each level minimizing wiring mistakes
- Ideal solutions for limited spaces because of their compact designs



| Part Number        | ERT3                      | ERT3E                  | ERT3S                        |
|--------------------|---------------------------|------------------------|------------------------------|
| Type               | Triple-level Feed-through | Triple-level w/ Ground | Triple-level Sensor terminal |
| Dimensions (LxWxH) | 87 x 6 x 62 mm            | 87 x 6 x 66 mm         | 74 x 6 x 65 mm               |
| I MAX              | 24A                       | 24A                    | 24A                          |
| V MAX              | 300V                      | 300V                   | 300V                         |
| WIRE SIZE          | 26 - 12 AWG               | 26 - 12 AWG            | 26 - 12 AWG                  |
| PCS/PKG            | 25                        | 25                     | 20                           |
| PRICE/PKG          | <b>\$46</b>               | <b>\$115</b>           | <b>\$35</b>                  |
| END BRACKET        | ES3                       | ES3                    | ES3                          |
| PCS/PKG            | 25                        | 25                     | 25                           |
| PRICE/PKG          | <b>\$8</b>                | <b>\$8</b>             | <b>\$8</b>                   |
| END PLATE          | EPT3                      | EPT3E                  | EPT3S                        |
| PCS/PKG            | 10                        | 10                     | 10                           |
| PRICE/PKG          | <b>\$3</b>                | <b>\$3</b>             | <b>\$4</b>                   |
| SMALL SEPARATORS   | SP1BEIGE                  | SP1BEIGE               | SP1BEIGE                     |
| PCS/PKG            | 100                       | 100                    | 100                          |
| PRICE/PKG          | <b>\$18</b>               | <b>\$18</b>            | <b>\$18</b>                  |
| JUMPER - 2 pole    | CC2.5/2T                  | CC2.5/2T               | CC2.5/2T                     |
| PCS/PKG            | 25                        | 25                     | 25                           |
| PRICE/PKG          | <b>\$23</b>               | <b>\$23</b>            | <b>\$23</b>                  |
| JUMPER - 10 pole   | CC2.5/10T                 | CC2.5/10T              | CC2.5/10T                    |
| PCS/PKG            | 5                         | 5                      | 5                            |
| PRICE/PKG          | <b>\$21</b>               | <b>\$21</b>            | <b>\$21</b>                  |
| MARKING TAGS       | MT5                       | MT5                    | MT5                          |



**FREE Ground Shipping!\***  
for online orders over \$500



## Terminal Block Fuse Holders

Fuse terminals are available for 5x20mm and 1/4x1 1/4" fuses. The fuse terminals include a lever arm or a removable fuse cartridge. The fuse terminals are also available with LED indication.



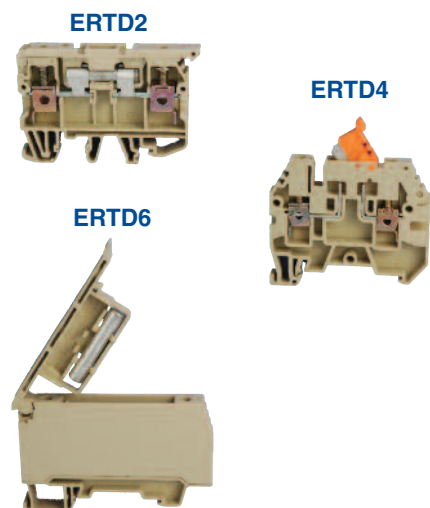
| Fuse               | 5x20mm         | 5x20mm w/LED    | 5x20mm w/ removable holder | 5x20mm w/ removable holder & LED | 1/4"x1 1/4"    | 1/4"x1 1/4" w/LED |
|--------------------|----------------|-----------------|----------------------------|----------------------------------|----------------|-------------------|
| Dimensions (LxWxH) | 63 x 8 x 51 mm | 63 x 8 x 51 mm  | 54 x 6 x 73 mm             | 63 x 8 x 51 mm                   | 63 x 8 x 51 mm | 63 x 8 x 51 mm    |
| I MAX              | 6.3A           | 6.3A            | 6.3A                       | 6.3A                             | 10A            | 6.3A              |
| V MAX              | 300V           | 300V            | 300V                       | 300V                             | 300V           | 300V              |
| WIRE SIZE          | 8 - 26 AWG     | 8 - 26 AWG      | 10 - 26 AWG                | 10 - 26 AWG                      | 8 - 26 AWG     | 8 - 26 AWG        |
| PCS/PKG            | 5              | 5               | 5                          | 5                                | 5              | 5                 |
| PRICE/PKG          | \$10           | \$18            | \$11                       | \$22                             | \$27           | \$39              |
| Part Number        | ERF2-5PK       | -               | ERF3-5PK                   | -                                | ERF4-5PK       | -                 |
| w/24VAC LED        | -              | ERF2LD24AC-5PK  | -                          | ERF3LD24AC-5PK                   | -              | ERF4LD24AC-5PK    |
| w/24VDC LED        | -              | ERF2LD24DC-5PK  | -                          | ERF3LD24DC-5PK                   | -              | ERF4LD24DC-5PK    |
| w/110VAC LED       | -              | ERF2LD110AC-5PK | -                          | ERF3LD110AC-5PK                  | -              | ERF4LD110AC-5PK   |
| END BRACKET        | ES1            | ES1             | ES1                        | ES1                              | ES1            | ES1               |
| PCS/PKG            | 20             | 20              | 20                         | 20                               | 20             | 20                |
| PRICE/PKG          | \$5            | \$5             | \$5                        | \$5                              | \$5            | \$5               |
| END PLATE          | EPF2           | EPF2            | EPF3                       | EPF3                             | -              | -                 |
| PCS/PKG            | 10             | 10              | 25                         | 25                               | -              | -                 |
| PRICE/PKG          | \$4            | \$4             | \$4                        | \$4                              | -              | -                 |
| JUMPER - 2 pole    | -              | -               | CC4/2                      | CC4/2                            | -              | -                 |
| PCS/PKG            | -              | -               | 25                         | 25                               | -              | -                 |
| PRICE/PKG          | -              | -               | \$24                       | \$24                             | -              | -                 |
| JUMPER - 10 pole   | -              | -               | CC4/10                     | CC4/10                           | -              | -                 |
| PCS/PKG            | -              | -               | 5                          | 5                                | -              | -                 |
| PRICE/PKG          | -              | -               | \$22                       | \$22                             | -              | -                 |
| Marking Tags       | MT5            | MT5             | MT5                        | MT5                              | MT5            | MT5               |

See our Fuse Section for compatible glass and ceramic fuses.



## Disconnect Terminals

Disconnect terminals provide a method for breaking a circuit without removing wires. For the lever and removable disconnect terminals, the busbar can be replaced with a properly sized fuse when desired.



| Disconnect Type    | Lever (5x20mm bar) | Lever (1/4" bar) | Removable      | Knife-blade    | Test/Disconnect |
|--------------------|--------------------|------------------|----------------|----------------|-----------------|
| Dimensions (LxWxH) | 63 x 6 x 51 mm     | 63 x 6 x 51 mm   | 54 x 6 x 73 mm | 54 x 6 x 51 mm | 65 x 6 x 50 mm  |
| I MAX              | 6.3A               | 6.3A             | 10A            | 6.3A           | 50A             |
| V MAX              | 300V               | 300V             | 600V           | 300V           | 600V            |
| WIRE SIZE          | 26 - 8 AWG         | 26 - 8 AWG       | 26 - 10 AWG    | 26 - 10 AWG    | 16 - 8 AWG      |
| PCS/PKG            | 20                 | 20               | 20             | 20             | 20              |
| PRICE/PKG          | \$38               | \$94             | \$33           | \$26           | \$63            |
| Part Number        | ERTD2              | ERTD6            | ERTD3M         | ERTD4          | ERWT2           |
| END BRACKET        | ES1                | ES1              | ES1            | ES1            | ES1             |
| PCS/PKG            | 20                 | 20               | 20             | 20             | 20              |
| PRICE/PKG          | \$5                | \$5              | \$5            | \$5            | \$5             |
| END PLATE          | EPF2               | -                | EPF3           | EPF3           | EPWT            |
| PCS/PKG            | 10                 | -                | 25             | 25             | 10              |
| PRICE/PKG          | \$4                | -                | \$4            | \$4            | \$4             |
| JUMPER - 2 pole    | -                  | -                | CC4/2          | CCS4/2         | CC10/2W         |
| PCS/PKG            | -                  | -                | 25             | 25             | 10              |
| PRICE/PKG          | -                  | -                | \$24           | \$24           | \$15            |
| JUMPER - 10 pole   | -                  | -                | CC4/10         | CCS4/10        | CC10/10W        |
| PCS/PKG            | -                  | -                | 5              | 5              | 5               |
| PRICE/PKG          | -                  | -                | \$22           | \$22           | \$34            |
| Marking Tags       |                    |                  |                |                |                 |
| Group Marking      | MT5                | MT5              | MT5            | MT5            | MT5             |