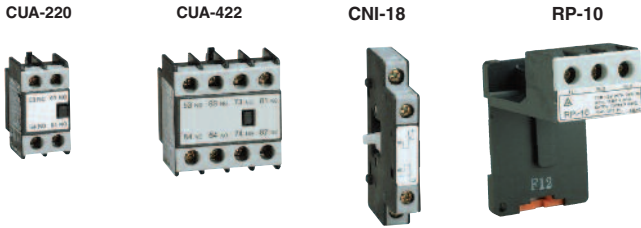
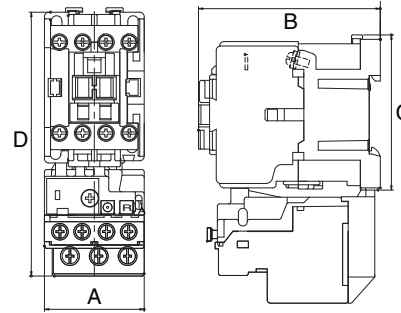


CU-Series Accessories



Part Number	Description	Price
CI-18	Mechanical Interlock, CU-9 to CU-22	\$5
CNI-18	Mechanical Interlock with 2 N.C. Aux Contacts, CU-9 to CU-22	\$8
CI-35	Mechanical Interlock, CU-40 to CU-80	\$5
CNI-100	Mechanical Interlock, CN-100 to CN-125	\$5
CNA-111S	Aux Contact Block, 1 N.O. / 1 N.C., Side Mount, CU-9 to CU-40	\$6
CUA-202	Aux Contact Block, 2 N.C., Top Mount, CU-9 to CU-80	\$5
CUA-211	Aux Contact Block, 1 N.O. / 1 N.C., Top Mount, CU-9 to CU-80	\$5
CUA-220	Aux Contact Block, 2 N.O., Top Mount, CU-9 to CU-80	\$5
CUA-422	Aux Contact Block, 2 N.O. / 2 N.C., Top Mount, CU-9 to CU-80	\$8
CNA-111BC	Aux Contact Block, 1 N.O. / 1 N.C., Side Mount, CN-100 to CN-300	\$6
CSS-1B	Coil Surge Suppressor, RC Type, 24VAC, CU-9 to CU-80	\$8
CSS-1E	Coil Surge Suppressor, RC Type, 120VAC, CU-9 to CU-80	\$8
CSS-1H	Coil Surge Suppressor, RC Type, 230VAC, CU-9 to CU-80	\$8
RP-10	Overload Separate Mounting Block, RHN-10 only	\$5

CU-Series Dimensions



contactor and optional overload shown assembled

Contactor	A	B	C	D
CU-9	1.77" (45mm)	3.23" (82mm)	2.76" (70mm)	4.17" (106mm)
CU-16	1.77" (45mm)	3.23" (82mm)	2.76" (70mm)	4.69" (119mm)
CU-22	2.16" (55mm)	3.62" (92mm)	2.83" (72mm)	4.92" (125mm)
CU-40	2.72" (69mm)	4.19" (106.5mm)	3.9" (99mm)	6.18" (157mm)
CU-50L	3.68" (93.5mm)	4.84" (123mm)	4.57" (116mm)	6.85" (174mm)
CU-65L	3.68" (93.5mm)	4.84" (123mm)	4.57" (116mm)	6.85" (174mm)
CU-80L	3.68" (93.5mm)	4.84" (123mm)	4.57" (116mm)	7.52" (191mm)
CN-100	3.94" (100mm)	5.24" (133mm)	5.31" (135mm)	8.86" (225mm)
CN-125	3.94" (100mm)	5.24" (133mm)	5.31" (135mm)	8.86" (225mm)
CN-150	5.12" (130mm)	6.19" (157mm)	7.09" (180mm)	11.89" (302mm)
CN-180	5.12" (130mm)	6.19" (157mm)	7.09" (180mm)	11.89" (302mm)
CN-220	5.75" (146mm)	7.21" (183mm)	7.8" (198mm)	N/A
CN-300	5.75" (146mm)	7.21" (183mm)	7.8" (198mm)	N/A

Enclosed D.O.L. Motor Starters



\$65

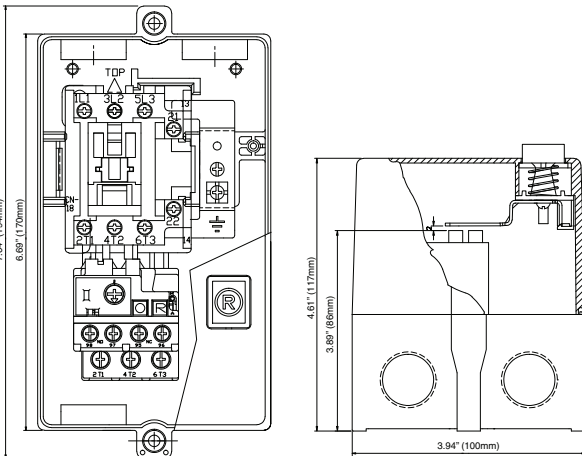
- Direct On Line Magnetic Motor Starter
- Complete assembly includes enclosure with Start & Stop/Reset Pushbuttons, CU-22 contactor and RHN-10 overload
- IP65 Rating environmental protection
- Max Ratings 10Hp @ 230V, 20Hp @ 460V
- Adjustable Class 10 Overload
- Internal Components UL / CUL Listed
- PG16 threaded knockouts provided

HP Ratings		Part Number	Current Range	Price
230V 1-PH	230V 3-PH			
-	-	HNFB-22-16/1.0A	0.67-1.0A	\$65
-	-	HNFB-22-16/1.5A	1.0-1.5A	\$65
-	-	HNFB-22-16/2.1A	1.4-2.1A	\$65
-	0.5	HNFB-22-16/2.7A	1.8-2.7A	\$65
0.5	0.75	HNFB-22-16/3.6A	2.4-3.6A	\$65
0.75	1.5	HNFB-22-16/5.0A	3.5-5.0A	\$65
1	1.5	HNFB-22-16/6.0A	4.0-6.0A	\$65
1.5	2	HNFB-22-16/8.5A	5.5-8.5A	\$65
2	3	HNFB-22-16/12.5A	8.5-12.5A	\$65
3	5	HNFB-22-16/18A	12.5-18A	\$65
5	7.5	HNFB-22-16/24A	17-24A	\$65
-	10	HNFB-22-16/30A	22-30A	\$65

Use these tables as a guide only. Use the nameplate Amps for the most reliable motor protection.

HP Ratings	Part Number	Current Range	Price
460V 3-PH			
-	HNFB-22-P6/1.0A	0.67-1.0A	\$65
-	HNFB-22-P6/1.5A	1.0-1.5A	\$65
1	HNFB-22-P6/2.1A	1.4-2.1A	\$65
1.5	HNFB-22-P6/2.7A	1.8-2.7A	\$65
2	HNFB-22-P6/3.6A	2.4-3.6A	\$65
3	HNFB-22-P6/5.0A	3.5-5.0A	\$65
3	HNFB-22-P6/6.0A	4.0-6.0A	\$65
5	HNFB-22-P6/8.5A	5.5-8.5A	\$65
7.5	HNFB-22-P6/12.5A	8.5-12.5A	\$65
10	HNFB-22-P6/18A	12.5-18A	\$65
15	HNFB-22-P6/24A	17-24A	\$65
20	HNFB-22-P6/30A	22-30A	\$65

Accessories		
Part Number	Description	Price
CG-PG16-1014	PG16 cord grip w/ seal ring and nut (10-14mm)	\$1.00
CG-PG16-0712	PG16 cord grip w/ seal ring and nut (7-12mm)	\$1.25
AG-1612-BR	PG16 to NPT 1/2" thread adapter, Ni plated	\$6



FREE Ground Shipping!
for online orders over \$500

