

TECO *SG2 K-TYPE*

K-TYPE PRODUCTS:

SG2-12KR-D/12KT-D//12KR-12D/12KT-12D

SG2-20KR-D/20KT-D//20KR-12D/20KT-12D

SG2-10KR-A//10KR-24A

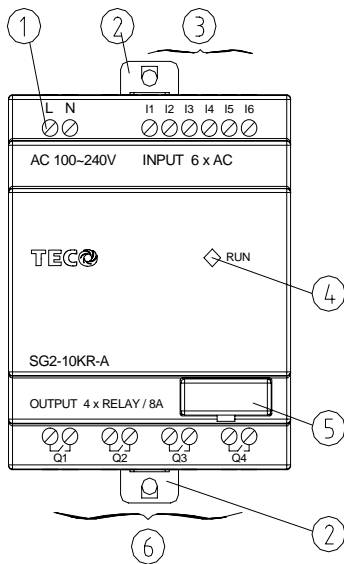
SG2-20KR-A//20KR-24A

WARN:

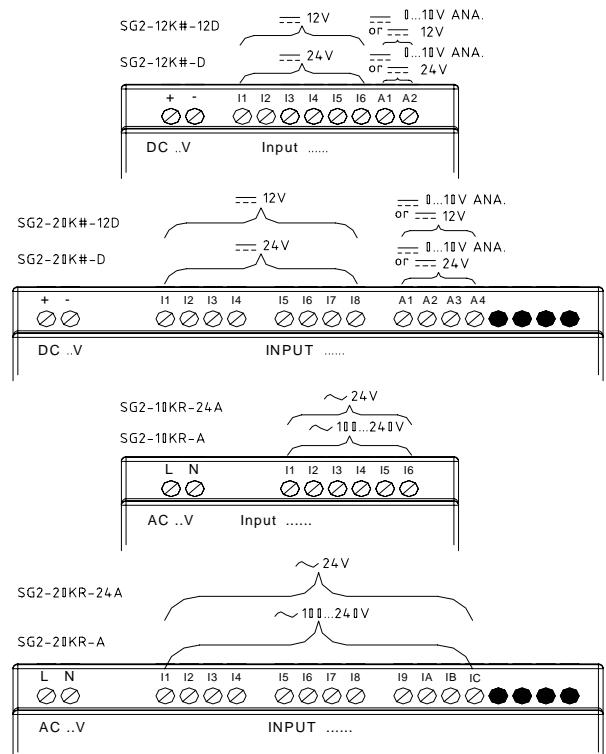
Unintentional equipment operation.

The application of this product requires know-how in design and program of control system. Only persons qualified are allowed to program, install and apply this product.

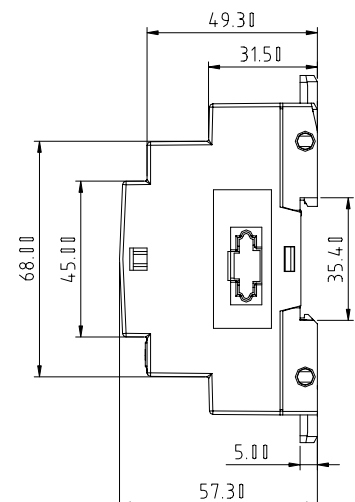
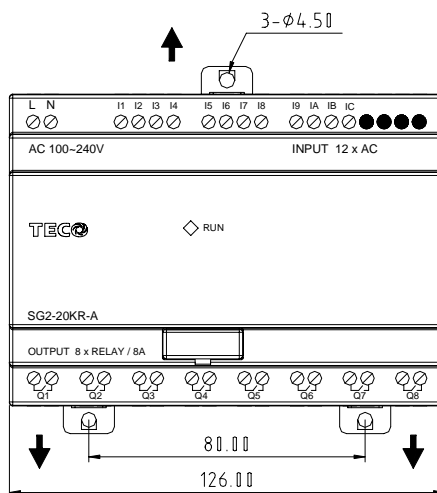
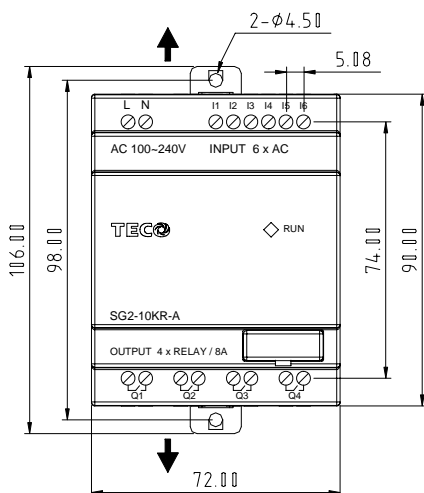
Failure to follow this instruction can result in death, serious injury or equipment damage.

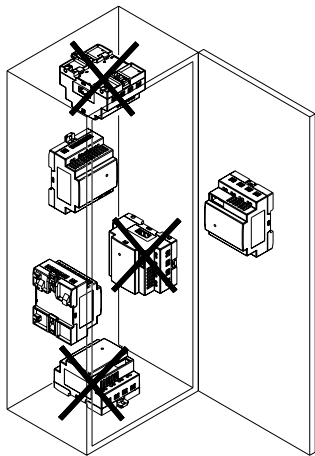
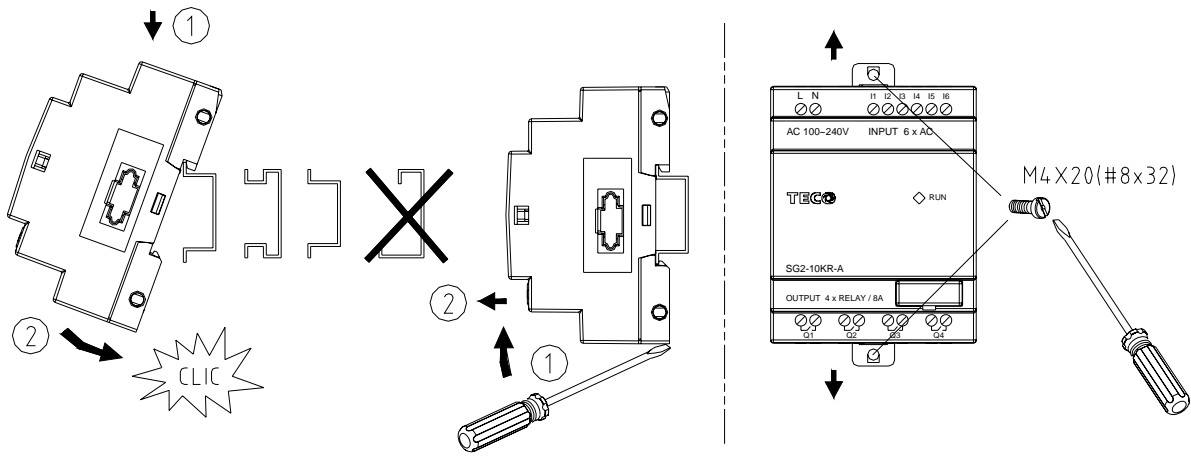


- ①—Power supply terminals
- ②—Retractable mounting feet
- ③—Input terminals
- ④—Voltage/ Operating mode green signaling LED
- ⑤—EEPROM cartridge or PC cable connection
- ⑥—Relay output terminals



Unit: mm (1 inch=25.4mm)

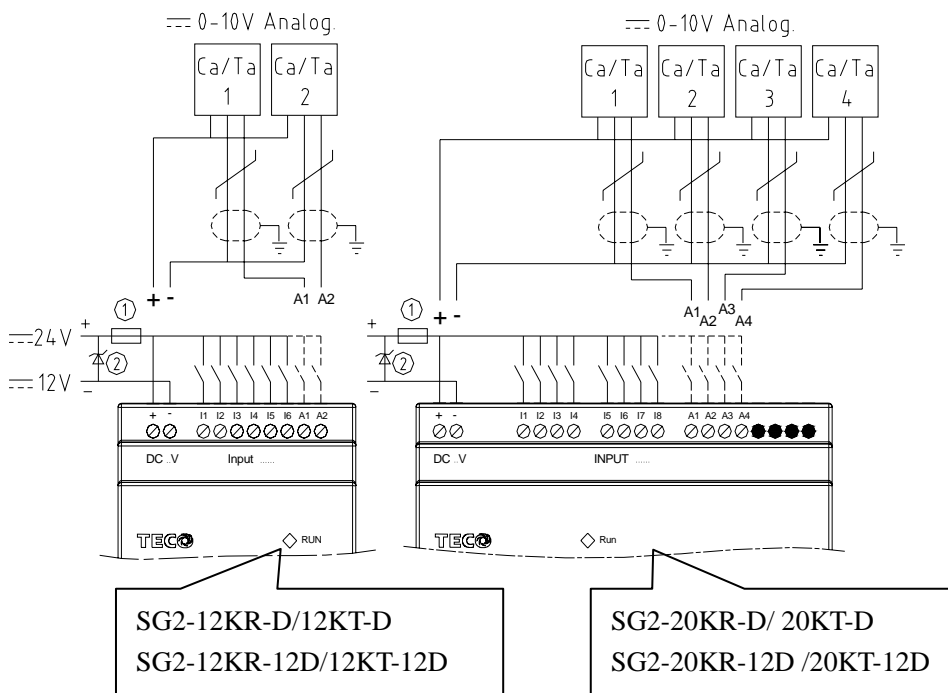


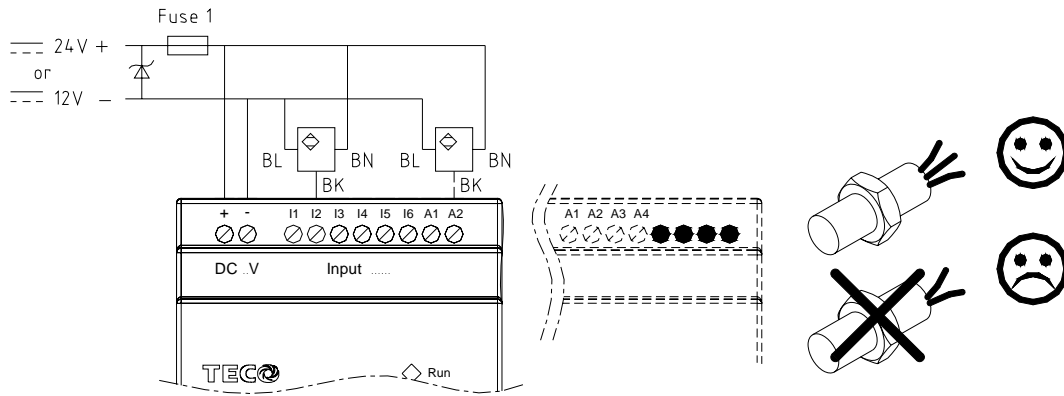


mm ²	0.14...1.5	0.14...0.75	0.14...2.5	0.14...2.5	0.14...1.5
AWG	26...16	26...18	26...14	26...14	26...16
∅ 3.5 (0.14in)	C		Nm	0.6	
			lb-in	5.4	

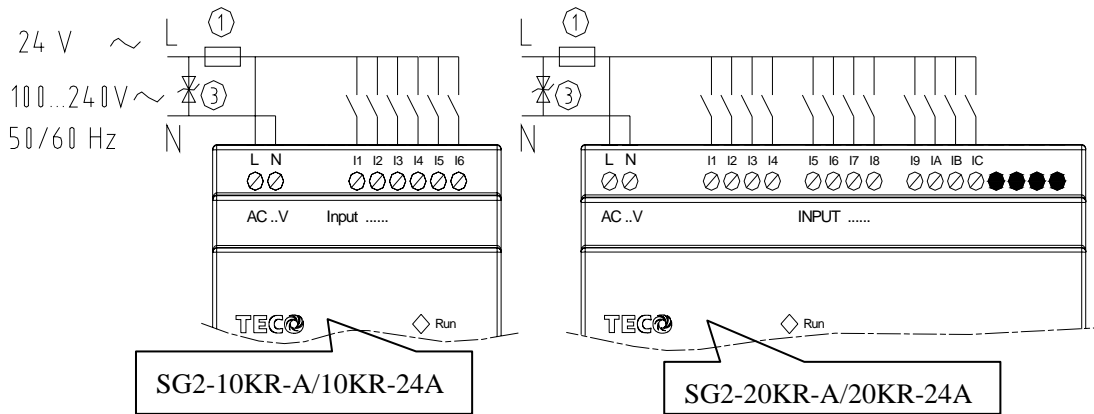
DANGER:
HAZARDOUS VOLTAGE
 Cut off all power before maintenance.
 Electric shock will result in death or serious injury.

Input 12/24V DC:

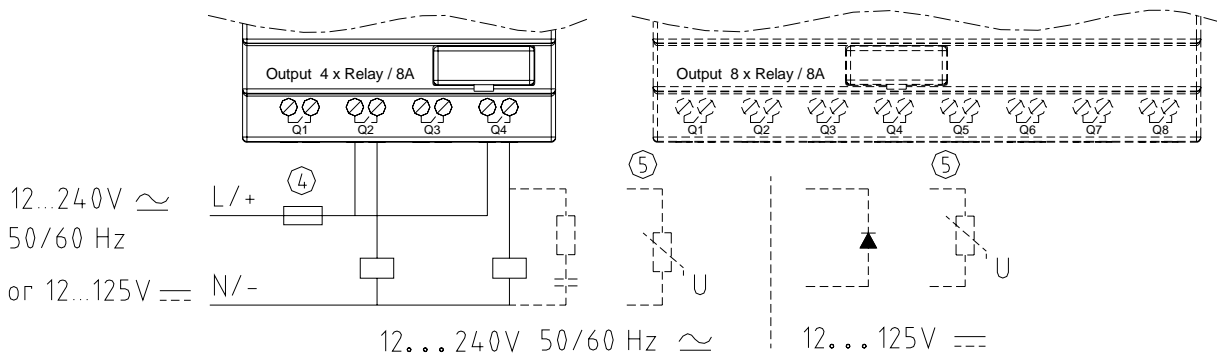




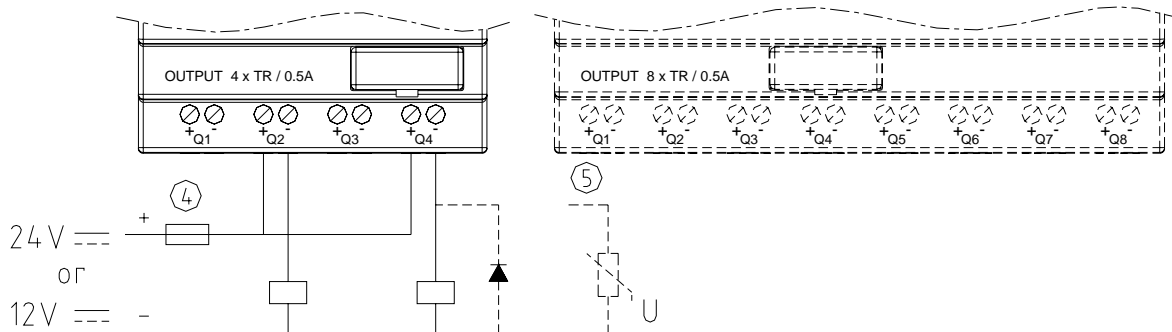
Input 24V AC or 100...240V AC:



Output (Relay):

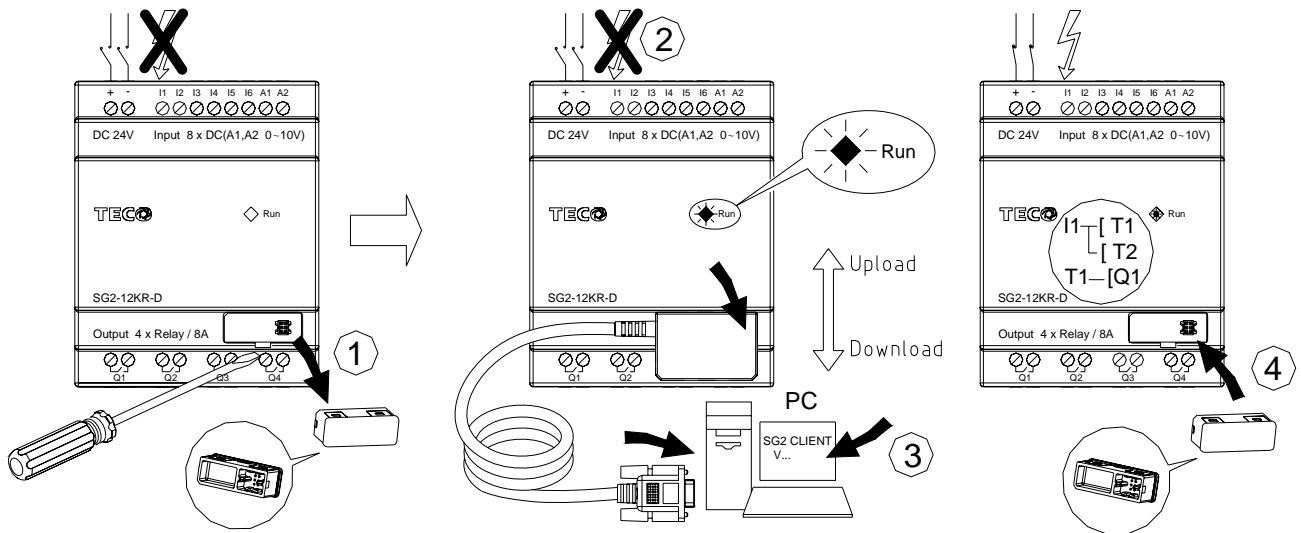


Output (Transistor):



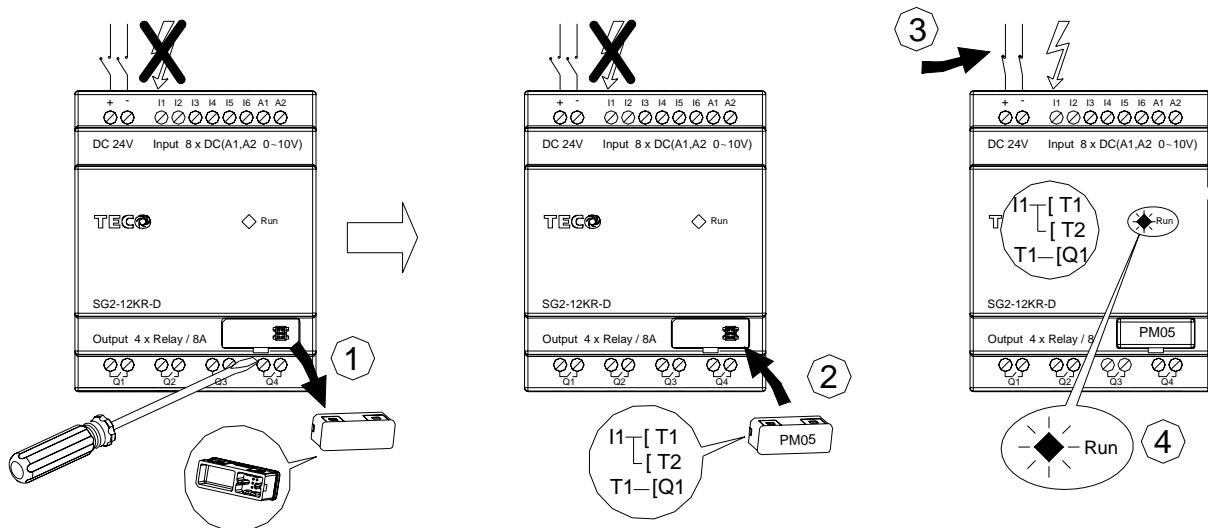
- 1- 1A quick-blowing fuse, circuit-breaker or circuit protector
- 2- Surge absorber (36V DC)
- 3- Surge absorber (400V AC)
- 4- Fuse, circuit-breaker or circuit protector
- 5- Inductive load

Communicate with CLIENT:



- Unplug the PM05 cartridge first.
- Don't electrify until the CLIENT CABLE is connected.
- Execute SG2 CLIENT software online.
- Plug the PM05 cartridge again after confirming the program is transferred.

Communicate with PM05:



- Unplug the PM05 cartridge first.
- Please do not electrify the product before PM05 is plugged.
- Electrify the product, the program will automatically transferred & executed.
- Following is what the LED working in different state description:

Run	Diagnose
◆	Power on the product, and the mould is ready.
◆	Slowly blinking, module is in Run mode.
◆	Rapidly blinking(5Hz), module in Fault mode.
◆	-ROM error -Incompatible Program -EEPROMerror -Expansive module error